

# BARBERING



## Level 2 & Level 3 services

### Cutting

Dry cut	£3.00
Wash, cut and style	£3.50

### Beard and moustache cutting

Moustache only	£1.00
Partial beard and moustache	£3.00
Full beard and moustache	£4.00

### Patterns in hair

Partial patterns	£2.50
Full head of patterns	£4.00

### Styling

Wash and style	£2.00
----------------	-------

## Level 3 services only

### Colouring

Slicing	£1 per slice
Weaving	£1 per foil
Regrowth (including cut)	£10.00
Block colour (including cut)	£12.00
Wet Shave	£12.50

**BARBERING OPENING TIMES ARE TERM-TIME ONLY  
AND MAY VARY - PLEASE CHECK BEFORE BOOKING.**

Thank you for your support and patience in helping us to provide the vital experience our students require during their training.

Our students are trained to the highest standards and we always endeavour to ensure you feel welcomed and that your visit is a pleasant experience. As our students are in training and working towards their qualification, they may take longer than anticipated to complete your treatment.

We kindly ask that you please switch off your mobile phone when entering the salon.

To enable students to achieve all their required units for assessment, we regret that requests for a particular student cannot be guaranteed.

Please note that due to the nature of the curriculum, not all the treatments are available throughout the year and session opening times can vary from term to term.

### HEALTH AND SAFETY NOTICE TO CUSTOMERS

For safety reasons, we regret that we are unable to accept as clients, children under the age of 12 and those under 16 for chemical treatments. Children under 12 are not permitted in the Hairdressing and Beauty Salons.

### CHILDREN

We aim to promote a calm and relaxing atmosphere within the salon and therefore request that you do not bring babies or children with you to your appointment.

### CANCELLATIONS

24 hours' notice would be very much appreciated. Regrettably, it may be necessary, on occasion, to cancel or change appointments at short notice.

### PARKING

There is limited parking at the College:

- Clients parking at College are required to pay at the ticket machine, sign in and provide vehicle details at Main Reception. Please check the car park information boards for parking charges and times.

- Clients can use the local Park & Ride scheme at Silk Mills which will drop you close to the front of the College.

**DIVA**  
PRO STYLING

*Eve Taylor*  
LONDON  
Est. 1983

THE BLUEBEARDS  
REVENGE

**KAESO**  
PROFESSIONAL. NATURAL. BEAUTIFUL SKIN.

**dermalogica**  
a skin care system researched and developed by The International Dermal Institute

**L'ORÉAL**  
PROFESSIONNEL  
PARIS

**Directions**

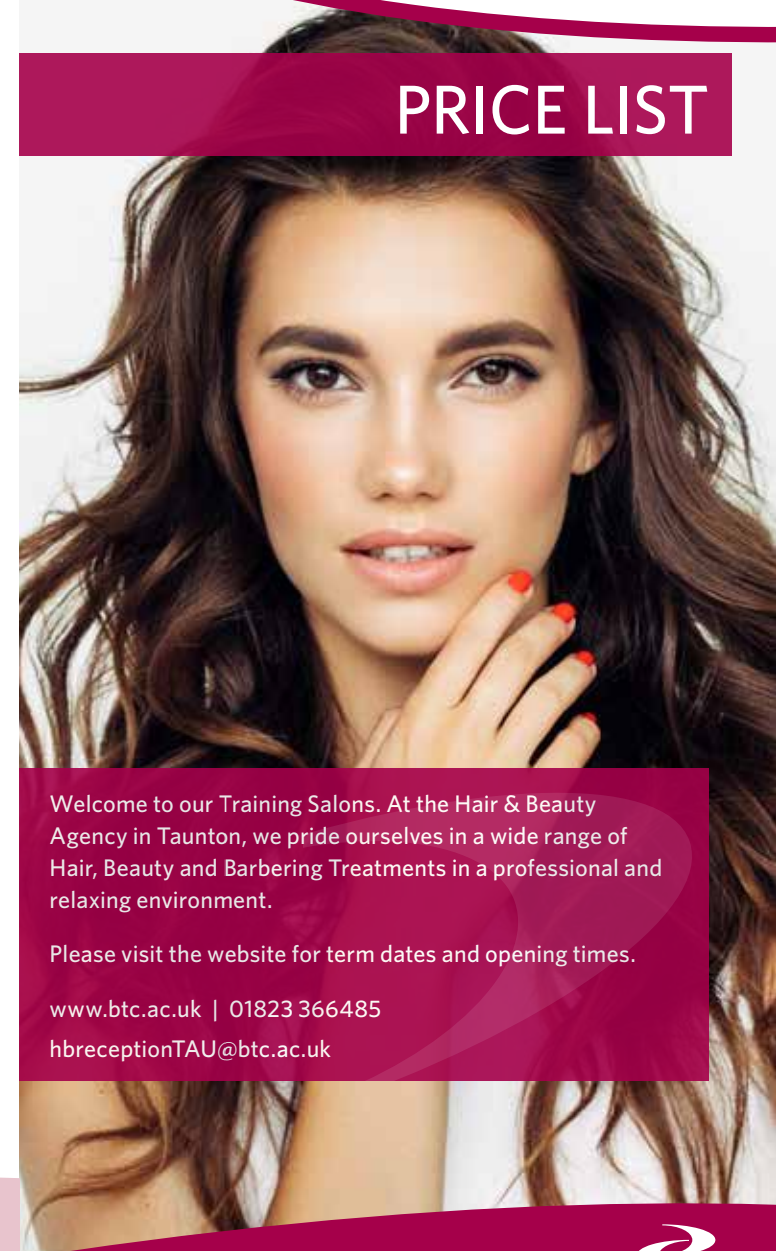
CB

  
BRIDGWATER  
& TAUNTON  
COLLEGE

Wellington Road, Taunton, Somerset TA1 5AX  
01823 366366 | [www.btc.ac.uk](http://www.btc.ac.uk)

# HAIR & BEAUTY AGENCY

## PRICE LIST



Welcome to our Training Salons. At the Hair & Beauty Agency in Taunton, we pride ourselves in a wide range of Hair, Beauty and Barbering Treatments in a professional and relaxing environment.

Please visit the website for term dates and opening times.

[www.btc.ac.uk](http://www.btc.ac.uk) | 01823 366485

[hbreceptionTAU@btc.ac.uk](mailto:hbreceptionTAU@btc.ac.uk)



[www.btc.ac.uk](http://www.btc.ac.uk)

  
BRIDGWATER  
& TAUNTON  
COLLEGE

## BEAUTY TREATMENTS

Dermalogica products are a premium skincare range with no artificial colours or fragrances and their products are cruelty-free.

The ingredients used in Dermalogica products are designed for clients to feel clean, smooth and hydrated whilst keeping the skin at an optimal level. By using Dermalogica in our treatments, we are able to offer professional skincare services.

### SKIN TREATMENTS

Full Facial - 1hr	£20
<i>Includes cleanse, exfoliate, 20min massage and mask</i>	
Prescription Facials - Level 3 students only, 1hr 15mins	£24
<i>Includes an advanced facial which incorporates one of the following electrical machines:</i>	
Micro Current Facial - a non-surgical facelift which tones, lifts and improves facial contours	
Galvanic Facial - aids the removal of congestion, hydrates dry skin tissue, improves moisture retention and revitalises the skin	
Vacuum Suction Facial - helps in the removal of oily blockages as well as improving the lymph drainage	
Direct High Frequency Facial - stimulating, antibacterial and particularly beneficial for congested problem skin	
Indirect High Frequency Facial - treats dry, dehydrated skin and improves the skin's appearance.	

### BROW TREATMENTS

Brow Tweeze	£6
Brow Tint*	£8
Lash Tint*	£8
Lash and Brow Tint*	£12

*\*Please note, a patch test is required 48 hours in advance - please confirm when booking*

### WARM WAXING AND HOT WAX TREATMENTS

Half Leg Wax	£10
Full Leg Wax, including Bikini Line	£15.50
Bikini Wax	£6
Underarm Wax	£6
Facial Wax	£6
Brow Wax	£6

### MANICURE AND PEDICURE

Standard Manicure	£10
<i>Includes massage and polish application</i>	
Luxury Manicure	£15
<i>Incorporating hand exfoliation, hand mask, thermal mitts and polish</i>	
Standard Pedicure	£10
<i>Includes massage and polish application</i>	
Luxury Pedicure	£15
<i>Incorporating foot exfoliation, foot mask, thermal booties and polish</i>	

## BODY TREATMENTS

Full Body Massage - 1hr	£15
Pre-Blend Body Massage	£15
Hot Stone Massage - 1hr 15mins	£20
<i>A massage that uses smooth, flat and heated rocks placed at key points on the body</i>	
G5 Massage - 30mins	£10
<i>Mechanical deep tissue massage which increases the circulation and improves the skins appearance</i>	
Micro Current for Upper Arms - 30mins	£10
<i>Tones, firms and lifts</i>	
Faradic Treatment - 30mins	£10
<i>Improves the muscle tone and body contours by stimulating muscle activity on areas such as abdomen, buttocks and thighs - a course of treatments is recommended</i>	
Galvanic Cellulite Treatment - 30mins	£10
<i>Helps combat and prevent the build-up of cellulite using a galvanic current - a course of treatments is recommended</i>	
Vacuum Suction Treatment - 30mins	£10
<i>A relaxing treatment using oil to help eliminate a build-up of body fluids and improve Lymph drainage</i>	
High Frequency Treatment - 30mins	£10
<i>An ideal treatment for a 'back facial'. Deep cleansing, purifying and stimulating</i>	

Most treatments are suitable for both male and female clients  
For skin and body treatments, please add an extra 10-15mins for consultation.

## HAIR TREATMENTS

Cut and Finish	£10
Restyle	£15
Shampoo and Set	£6
Blow Dry	£8
Deep Conditioning Treatment & Blow Dry	£10

### PERMS - Haircuts not included in cost

Standard Perm	£20
Speciality Perm (Level 3 students only)	£25
Top Section Perm	£15

### COLOUR AND BLOWDRY - Haircuts not included in cost

Semi-permanent/toner*	£15
-----------------------	-----

### PERMANENT/QUASI

Re-touch*	£20
Full Head*	£25

### HIGHLIGHTS & LOWLIGHTS

Full Head Foils*	(Above shoulder) £30	(Below shoulder) £35
Partial (1/2 head or T-section)*	£25	
Cap*	£18	
Money piece (Max 7 foils)	£10	
Individual Packets*	£2	

### COLOUR PACKAGES (Level 3 Students only)

Full head bleach with toner*	£30
Retouch bleach with toner*	£25
Full head highlights with infill of colour*	£35
Half head highlights with infill of colour*	£30
Balayage*	£30
Metal Detox Treatment	£10

*This 3 step treatment neutralises excess copper in the hair caused by water and environmental damage, to alleviate the results of colour, balayage and lightening services.*

Long Hair Colour (Quotation on consultation)

Colour Correction (Quotation on consultation)

Colour Remover (Quotation on consultation)

*\*Please note, for clients receiving hair colouring services, a skin test will need to be carried out 48 hours in advance - please confirm with Reception when booking*