



University  
Centre  
Somerset

DEGREES FOR REAL LIFE



HEALTH, WELLBEING  
AND EDUCATION

PROSPECTUS  
2026/27

THE HEALTH SECTOR IS THE  
**LARGEST EMPLOYER**

IN THE UK

(careerpivot - health & social care and sport & leisure key facts)

NHS ENGLAND REPORTED **43,339**  
REGISTERED NURSE VACANCIES IN 2023-24



CONTENTS

4	Faculty Facilities	28	Registered Nurse Degree Apprenticeship
6	Access to HE	30	Student Nursing Associate Apprenticeship
8	Higher & Degree Apprenticeships	32	Adult Care Level 4 Diploma
10	Early Childhood Education and Care BA (Hons)	34	Leadership & Management for Adult Care Level 5 Diploma
12	Early Childhood Education and Care Foundation Degree	36	Therapeutic Counselling Level 4
14	Early Childhood Education and Care BA (Hons) Top-up	38	Sports Science and Coaching BSc (Hons)
16	Nursing (Adult) BSc (Hons)	40	Certificate in Education Level 5 Certificate
20	Nursing (Mental Health) BSc (Hons)	42	PGCE Level 6 / Level 7 Diploma
24	Nursing Associate Foundation Degree	44	Where to find us
26	Assistant Practitioner (Multiple pathways)	45	UCS course list



# Faculty of Health, Wellbeing and Education

**The Health, Wellbeing and Education courses at UCS are designed to enable progression to a range of related fields, including nursing, social work, mental health, older adult care, early years provision and more.**

The faculty is transforming teaching and learning by using iPads and tablets to open up pathways to learning. This creates a digital learning space and also provides access to materials that students might not otherwise have.

Our Sport programmes have long-standing relationships with elite clubs and organisations to ensure our students get real-world experience during their study.

## Clinical Skills & Simulation Centre

Our Clinical Skills & Simulation Centre is designed to immerse students into real clinical practice and is a safe and supported environment in which to learn. The centre has three fully equipped, virtual ward environments as well as large clinical education spaces. With ongoing support and feedback from our specialist teaching team, use of these facilities enables students to feel more confident and prepared prior to going out on clinical placements, and helps to equip them with skills and techniques that are essential to becoming a qualified practitioner.

## Sports facilities

Across our campuses, we have a range of facilities including a floodlit 3G FIFA approved artificial pitch, five football pitches, a rugby pitch, sports halls, gyms, sports rehabilitation rooms and a studio cycling facility. We also have a stunning 9-hole golf course in the beautiful Cannington countryside and an Outdoor Activity Centre.

In addition, sports students learn in a new dedicated sports science lab containing a range of physiology and biomechanics equipment and have use of sports halls and outdoor spaces for coaching.





## Access to HE

**An Access to Higher Education Diploma is designed to provide a route for learners aged 19 or over who possess few formal qualifications to progress to university-level study. It can lead to a wide range of career and higher education opportunities.**

We currently offer two different routes, each with progression opportunities linked to them:

- **Nursing, Midwifery and Healthcare**
- **Science.**

In addition, the Access to HE course includes core study skills sessions to support learning and progression. These include:

- **Research and Study Skills**
- **Digital Skills**
- **English**
- **Maths**
- **UCAS application support**
- **Tutorial.**

### Teaching and Assessment

The majority of modules are taught via lectures; other teaching methods include seminars, tutorials, workshops and guided learning/independent activities. The Access to HE course utilises a blended learning approach, and some sessions will be delivered online.

### Where does it lead?

Successful completion of this course will provide you with a qualification that will enable you to apply to study a university-level course. In recent years, students have gone on to study a wide range of degree courses including nursing, midwifery, veterinary science, radiography and dental hygiene/therapy.

**Duration:** 30 weeks

**Location:** Taunton

### Entry requirements:

Students will need qualifications at Level 2 including a GCSE Grade C/4 in English (language or literature), Functional Skills Level 2 in English or equivalent qualifications. GCSE Grade D/3 in mathematics, Functional Skills Level 1 in maths or equivalent qualification. Learners should also have basic IT skills with a device that can be used for substantial written work, and an internet connection.

You are required to be aged 19 or over and may be eligible for a loan to cover your course fees.



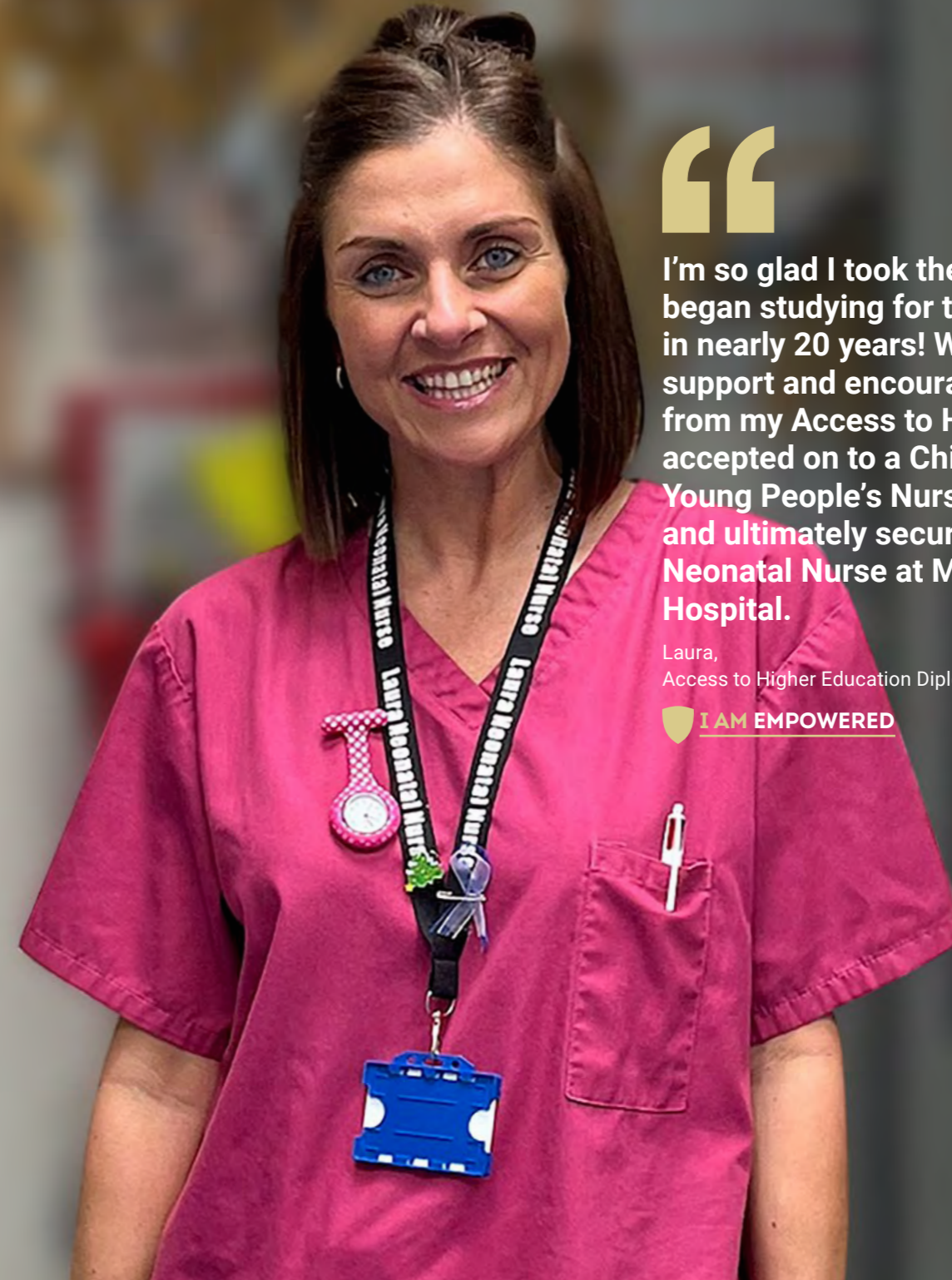
If you complete an Access to HE course and then go on and complete a degree or other recognised higher education course, you will not have to repay the remaining loan for the Access to HE course.

*If you are looking for an Art & Design course to prepare for entry to a creative degree at university, please see the Art & Design Foundation Diploma (Pathways to HE) on our website, or on page 18 of the Business and Creative Industries prospectus.*



**I'm so glad I took the leap and began studying for the first time in nearly 20 years! With incredible support and encouragement from my Access to HE tutor, I was accepted on to a Children and Young People's Nursing degree and ultimately secured a job as a Neonatal Nurse at Musgrove Park Hospital.**

Laura,  
Access to Higher Education Diploma



## Higher & Degree Apprenticeships

**Our expertise and partnerships with over 1,500 local, regional and national employers enable us to provide a diverse range of Apprenticeships that help address the increasing demand for higher-level skills in Somerset and beyond.**

An Apprenticeship is an effective way to study, as it enables individuals to gain a nationally recognised qualification while obtaining practical on-the-job experience.

Higher and Degree Apprenticeships have become a popular choice for individuals looking for a fast track into a career, as they provide the chance to gain applicable skills and knowledge about an industry. Higher Apprenticeships may include the achievement of academic/vocational qualifications at Level 4 and 5 such as HNCs, HNDs, and Foundation Degrees, while Degree Apprenticeships

can provide qualifications up to Level 6 or 7, such as a full BA, BSc, or BEng Honours Degree, or in some cases, even a Master's Degree.

We work closely with our network of employers to offer Apprenticeships in a wide range of subjects, including nursing, nuclear engineering, leadership and management, and much more. UCS is continually updating its portfolio to support industry demand, ensuring that apprentices are gaining the most relevant and up-to-date knowledge and skills.

The length of an Apprenticeship can vary, with a Higher Apprenticeship lasting up to 5 years and a Degree Apprenticeship taking between 4 to 6 years. Apprentices are employed full-time by their respective employers, and the combination of work and study can vary from one employer

to another. Some Apprenticeships may involve day release, studying at UCS one day per week, while others may involve block release or a blended approach that combines online and face-to-face learning.

If you're interested in pursuing an apprenticeship, our dedicated team is ready to help.

**Call 01278 655111** or email **apprenticehelp@btc.ac.uk** for more information.

 **University Centre Somerset is part of Bridgwater & Taunton College, one of the largest apprenticeship providers in the country.**

## Higher & Degree Apprenticeships

Our Apprenticeship offer is continually developing and changing due to business demands and changes to the Apprenticeship structure. Therefore, this list should only be considered as a guide.

### **BUSINESS**

Associate Project Manager Level 4  
Operations/Departmental Manager Level 5

### **CONSTRUCTION**

Construction Design and Build Technician Level 4

### **ENGINEERING AND NUCLEAR**

Engineering Manufacturing Technician Level 4  
Nuclear Engineer Level 6 Degree

### **HEALTH AND SOCIAL CARE**

Lead Practitioner in Adult Care Level 4  
Leader in Adult Care Level 5  
Healthcare Assistant Practitioner Level 5  
Leadership and Management for Adult Care Level 5  
Nursing Associate Level 5  
Registered Nurse Level 6

### **HEALTH AND FITNESS**

Sports Coach Level 4  
Occupational Therapist Level 6\*  
Youth Worker Level 6\*

### **LAND-BASED**

Countryside Ranger Level 4

*\*subject to validation & approval*

PROSPECTUS **2026/27**

9



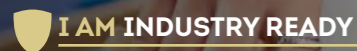
# Early Childhood Education and Care

BA (Hons)



I work as a Learning Support Assistant at a primary school, a role I secured through my placement at UCS. Gaining practical experience has prepared me for my next step to do a PGCE which is my final step to becoming a Primary School Teacher.

Lauren,  
Early Childhood Education and Care  
BA (Hons)



**Whether you are already working in an early years setting or have no experience with children, this course enables you to gain theoretical knowledge as well as practical skills through class-based learning and placement/work links.**

As the course is mapped against the QAA benchmarks for Early Childhood degrees and includes assessment in practice, students graduate with a BA (Hons) degree at Level 6 which is counted as full and relevant at Level 3 by the DfE. This means graduates are qualified to work as a practitioner in any Ofsted-registered setting.

In addition to this, students are offered the opportunity to be assessed against the new Graduate Practitioner Competencies, developed by the Early Childhood Studies Degree Network (ECSDN).

Successful completion of this optional module provides you with an additional certificate.

Modules may include:

- **The Child in Society**
- **Child Health and Wellbeing**
- **Introduction to Leadership and Management**
- **The Reflective Practitioner**
- **Dissertation: Primary Research or Secondary Research.**

## Teaching and Assessment

There are no exams on this programme, each module is assessed by means of assignments which may include reflective essays, the development of learning resources and presentations. Assessments are linked to practice on several occasions and placement/work weeks are integral to learning opportunities. Teaching sessions take the form of short lectures, supervised discussions, small group work and guest speakers. Personal tutor and academic support is provided and facilitates individual and whole group progression.

## Progression Opportunities

You could secure employment in family support and projects working in a range of early years settings such as children's centre worker, early years practitioner or a role within a primary school. The Honours Degree could also lead to management and leadership roles within early years settings, children's centres and schools.

Postgraduate qualifications such as PGCE and Masters degrees are frequent destinations for students.

## ENTRY REQUIREMENTS

Typically entrants will possess:

- A minimum of 80 UCAS points from a full Level 3 qualification
- At least four GCSEs at grade 4 and above including English and maths, or Level 2 equivalent.

You will be required to undergo a Disclosure and Barring Service check prior to commencing any work placement.

Mature students who do not meet these formal entry requirements are welcome to apply if they can evidence their interest, relevant experience and knowledge in the field of study.

Type:	Bachelors Degree
UCAS Code:	887B
Institution code:	B70
Attendance:	Full-time
Location:	Taunton
Awarding body:	The Open University



# Early Childhood Education and Care

## Foundation Degree



**I work as an Early Years Practitioner while studying at UCS. The course's flexibility, interactive lectures, and supportive staff have boosted my confidence and skills, helping me excel in my role.**

Megan,  
Early Childhood Education and Care  
BA (Hons)



**Whether experienced in the early years sector or not, if you are committed to making a difference to the lives of children, young people and families, this Foundation Degree in Early Childhood Education and Care is the perfect underpinning for your career. The programme has been developed to link closely with placement/work experiences and extensive research has been conducted to inform the design and delivery of the programme.**

Modules may include:

- **The Child in Society**
- **Child Health and Wellbeing**
- **Working with Children and Families**
- **Language & Literacy Development**
- **The Reflective Practitioner**
- **Introduction to Leadership and Management.**

### Teaching and Assessment

There are no exams on this programme, each module is assessed by means of assignments which may include reflective essays, the development of learning resources and presentations. Teaching sessions take the form of short lectures, supervised discussions, small group work and guest speakers. Personal tutor and academic support is provided and facilitates individual and whole group progression.

### Progression Opportunities

This Foundation Degree will open up a variety of career paths and can lead to employment in family support and projects working in a range of early years settings including children's centre worker, home/school liaison officer, early years practitioner or a role within a primary school. A top-up year is available for students who complete the Foundation Degree to achieve a Level 6 BA (Hons) Degree.



*Higher Technical Qualifications (HTQs) have been specifically developed with employers and businesses so that students will get the training, knowledge, and skills they are looking for, unlocking high-skilled jobs.*

### ENTRY REQUIREMENTS

Typically entrants will possess:

- A minimum of 64 UCAS tariff points from a full Level 3 qualification in a related subject area
- At least four GCSEs including English and maths at grade 4 and above, or a recognised equivalent.

You will be required to undergo a Disclosure and Barring Service check prior to commencing any work placement.

Mature students who do not meet these formal entry requirements are welcome to apply if they can evidence their interest, relevant experience and knowledge in the field of study.

Type:	Foundation Degree
UCAS Code:	86G4
Institution code:	B70
Attendance:	Full-time
Location:	Taunton
Awarding body:	The Open University

*There may be the opportunity to study our full-time courses on a part-time basis, please contact us to discuss.*





# Early Childhood Education and Care

BA (Hons) Top-up

“

As a mature student coming back to education, I needed to learn how to write academically, and thanks to the supportive staff I have achieved this.

I have enjoyed my time at UCS, and think I am most proud of my year 2 research paper being accepted for publication by the Early Childhood Studies Degree Network (ECSDN).

Donna,  
Early Childhood Studies  
BA (Hons)

 I AM PROFESSIONAL



**If you are committed to making a difference to the lives of children, young people and families or you are looking to advance your current Foundation Degree qualification, the Top-up Degree in Early Childhood Education and Care is the perfect programme to enhance your career opportunities.**

You will develop skills as a critically reflective practitioner and learn to analyse and critique ideas and practice, in order to inform your lifelong learning post-qualification.

In addition to this, students are offered the opportunity to be assessed against the new Graduate Practitioner Competencies. Successful completion of this optional module provides you with an additional certificate.

Modules may include:

- **Concepts of Childhood**
- **Global Perspectives on Education**
- **Contemporary Discourses in Early Years**
- **The Creative Reflective Practitioner**
- **Dissertation.**

## Teaching and Assessment

There are no exams on this programme, each module is assessed by means of assignments which may include reflective essays the development of learning resources and presentations. Teaching sessions take the form of short lectures, supervised discussions, small group work and guest speakers. Placement/work-based experiences are integral to the learning opportunities on the programme. Personal tutor and academic support is provided and facilitates individual and whole group progression.

## Progression Opportunities

You could secure employment in family support and projects working in a range of early years settings as a children's centre worker, early years practitioner or a role within a primary school. The Honours Degree could also lead to management and leadership roles within early years settings, children's centres and schools.

Postgraduate qualifications such as PGCE and Masters degrees are frequent destinations for students.

## ENTRY REQUIREMENTS

Applicants must have:

- A Foundation Degree, HND or equivalent Level 5 qualification in an appropriate discipline
- At least four GCSEs including English and maths at grade 4 and above, or a recognised equivalent.

You will be required to undergo a Disclosure and Barring Service check prior to commencing any work placement.

Type:	Bachelors Degree
UCAS Code:	X310
Institution code:	B70
Attendance:	Full-time
Location:	Taunton
Awarding body:	The Open University

*There may be the opportunity to study our full-time courses on a part-time basis, please contact us to discuss.*



# Nursing (Adult)

BSc (Hons)



The lecturers at UCS are supportive, approachable and always ready to help. As a visual learner, I benefit from their practical demonstrations and guidance, which enhance my understanding and make learning more effective. I hope to make my family and UCS proud as I continue my nursing journey.

Marie,  
Nursing (Adult)  
BSc (Hons)



**Nursing is a challenging but rewarding career that will impact and change lives, including your own. As a nurse you will play your part in improving access to healthcare, wellbeing, social inclusion, and quality of life.**

The course will enable students to work in hospital and community settings within the NHS, social care, primary care and private settings. Your studies will look at how to care for people across their lifespan and consider the importance of holistic nursing care.

You will learn from a passionate, enthusiastic, skilled and supportive team with a range of experience across the many different aspects of nursing. Your learning will be enriched by the very latest in best practice and clinical understanding.

This course has a strong practical focus, allowing you to gain competence carrying out the hands-on tasks you will perform in your career. About half your time will be spent on placements with our established partners. You will also have regular access to outstanding facilities including our Clinical Skills & Simulation Centre: virtual wards

where you will be able to creatively develop your clinical expertise in a safe, instructive environment.

Based at our Taunton campus, you will interact with and learn from other students from a range of healthcare courses. You will develop essential people skills as you work with patients and their families, as well as our partners on placements, in class and online.

Content may include:

- **Anatomy, Physiology and Pharmacology for Nursing**
- **Episodes of Care 1-4**
- **Fundamentals of Nursing Practice**
- **Principles of Nursing**
- **Sustainable Global Public Health**
- **Assessment and Decision Making**
- **Pharmacology and Medicines Management**
- **Research Methodologies of Nursing Enquiry**
- **Supporting People with Complex Needs**
- **Leadership and Supervision**
- **Nursing Final Project**
- **Transition to Registration.**

Plus, an independent study module where you choose the area of focus within your field of nursing.

## ENTRY REQUIREMENTS

Typically entrants will possess:

- A minimum of 112 UCAS points from a full Level 3 qualification
- GCSEs at grade 4 and above to include English and maths, or equivalent
- Applicants for who English is not their first language may be required to complete IELTS with a minimum overall IELTS (Academic) score of 7.0 or above with a minimum of 6.5 in writing, and 7.0 in all other sections of the test.

You will be required to complete:

- Disclosure and Barring Service check
- Occupational health check.

Type:	Bachelors Degree
UCAS Code:	B740
Institution Code:	B70
Attendance:	Full-time
Location:	Taunton campus
Awarding body:	UWE Bristol

**A £5,000**  
per year training grant  
may be available for  
eligible students.  
Scan this QR code  
for more  
information.



### Teaching and Assessment

Our philosophy of nurse education encompasses flexible, progressive, and innovative approaches ensuring you will be a caring, competent, and critically thinking nurse. Some of our approaches include experiential learning, enquiry and action-based learning, group work and face-to-face learning.

You will learn about the importance of your relationship as a nurse with both the service user and their family and friends. We will support you to develop the interpersonal skills you'll need to build therapeutic relationships with people in diverse cultural contexts.

Develop your expertise in healthcare systems, nursing management, and the sociology of health, wellness, and illness. Explore the latest research and evidence-based practice and learn to adapt and respond to changes



**Alongside my current role in general practice, I have my own podcast for Nursing Associates on Spotify and Amazon and run a peer support Facebook page for Student Nurses.**

Martyn,  
Nursing Associate Foundation Degree

in society and developments in care. With a strong focus on building independent learning and research skills, the course also provides an excellent preparation for future professional development. With guidance and support you will develop as an independent learner.

### Career Progression

Registered Adult nurses are in demand across the UK and our graduates enter careers in a variety of roles for the NHS, private and voluntary sector employers in community and hospital settings. You could go on to specialise in positions in hospitals, healthcare centres as a community nurse, in GP practices, schools, as a health visitor, or with patients in their own homes.

Once qualified you can also combine clinical practice with study on a post graduate course to specialise in a specific area. Progression could lead to senior positions such as consultant nurse, nurse specialist, researcher, or local or regional services manager.





# Nursing (Mental Health)

BSc (Hons)



The smaller class sizes at UCS made forming connections with staff and peers easy. My proudest achievement was excelling in Principles of Nursing, reinforcing my passion for helping others. UCS's supportive staff and the engaging course content have boosted my confidence for a future in community mental health.

Shen,  
Nursing (Mental Health)  
BSc (Hons)

 **I AM EMPOWERED**



**Nursing is a challenging but rewarding career that will impact and change lives, including your own. As a Mental Health nurse you will play your part in improving access to healthcare, wellbeing, social inclusion, and quality of life.**

The course will enable students to work in hospital and community settings within the NHS, social care, primary care and private settings. Your studies will look at how to care for people across their lifespan and consider the importance of holistic nursing care.

You will learn from a passionate, enthusiastic, skilled, and supportive team with a range of experience across the many different aspects of Mental Health nursing. Many are active researchers; your learning will be enriched by the very latest in best practice and clinical understanding. This course has a strong practical focus, allowing you to gain competence carrying out the hands-on tasks you will perform in your career. Half your time will be spent on placements with our established partners. You will also have regular access to outstanding facilities including our Clinical Skills & Simulation Centre: virtual wards where you will be able

to develop your clinical expertise in a safe, instructive environment.

Based at our Taunton campus, you will interact with and learn from other students from a range of health and social care courses. You will develop essential people skills as you work with patients and their families, as well as our partners on placements, in class and online.

Content may include:

- **Anatomy, Physiology and Pharmacology for Nursing**
- **Episodes of Care 1-4**
- **Fundamentals of Nursing Practice**
- **Principles of Nursing**
- **Sustainable Global Public Health**
- **Assessment and Decision Making**
- **Pharmacology and Medicines Management**
- **Research Methodologies of Nursing Enquiry**
- **Supporting People with Complex Needs**
- **Leadership and Supervision**
- **Nursing Final Project**
- **Transition to Registration.**

Plus, an independent study module where you choose the area of focus within your field of nursing.

## ENTRY REQUIREMENTS

Typically entrants will possess:

- A minimum of 112 UCAS points from a full Level 3 qualification
- GCSEs at grade 4 and above to include English and maths, or equivalent
- Applicants for who English is not their first language may be required to complete IELTS with a minimum overall IELTS (Academic) score of 7.0 or above with a minimum of 6.5 in writing, and 7.0 in all other sections of the test.

You will be required to complete:

- Disclosure and Barring Service check
- Occupational health check.

Type:	Bachelors Degree
UCAS Code:	B760
Institution Code:	B70
Attendance:	Full-time
Location:	Taunton campus
Awarding body:	UWE Bristol

**A £5,000**  
per year training grant  
may be available for  
eligible students.  
Scan this QR code  
for more  
information.



### Teaching and Assessment

Our philosophy of nurse education encompasses flexible, progressive, and innovative approaches ensuring you will be a caring, competent, and critically thinking nurse. Some of our approaches include experiential learning, enquiry and action-based learning, group work and face-to-face learning.

You will learn about the importance of your relationship as a nurse with both the service user and their family and friends. We will support you to develop the interpersonal skills you'll need to build therapeutic relationships with people in diverse cultural contexts.

Develop your expertise in healthcare systems, nursing management, and the sociology of health, wellness, and illness. Explore the latest research and evidence-based practice and learn to adapt and respond to changes in society and developments in care. With a strong focus on building independent

learning and research skills, the course also provides an excellent preparation for future professional development. With the help of distance learning and self-directed materials you will be supported to take responsibility for your own learning.

### Career Progression

Registered Mental Health nurses are in demand across the UK and our graduates enter careers in a variety of roles for the NHS, private and voluntary sector employers in community and hospital settings. You could go on to specialise in positions in hospitals, healthcare centres as a community nurse, in GP practices, schools, as a health visitor, or with patients in their own homes. Once qualified you can also combine clinical practice with study on a post graduate course to specialise in a specific area. Progression could lead to senior positions such as consultant nurse, nurse specialist, researcher, or local or regional services manager.






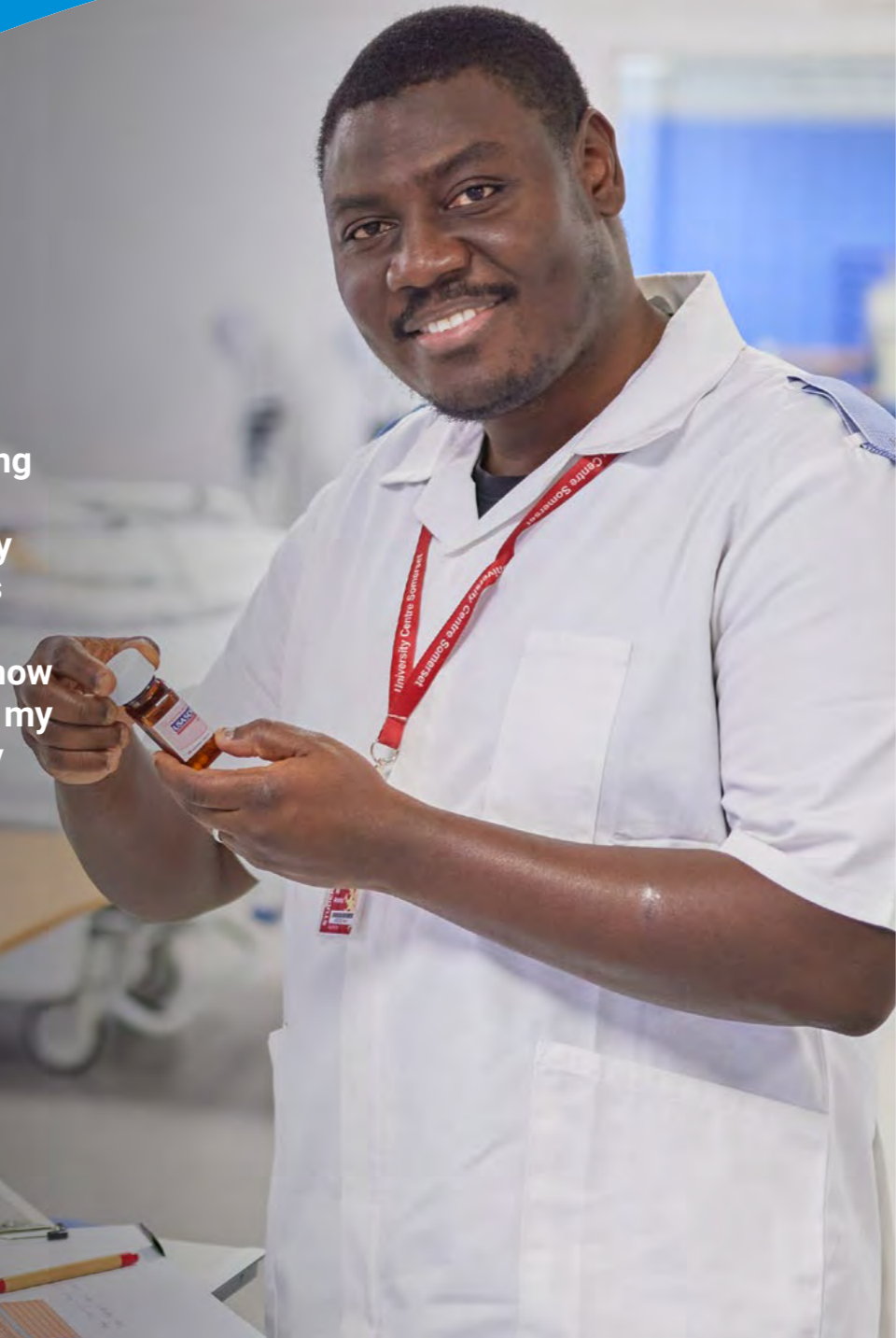
# Nursing Associate Foundation Degree



I work as a Student Nursing Associate at Somerset NHS Foundation Trust. My greatest achievement has been completing my first clinical placement, and I now feel confident in applying my knowledge to advance my career in nursing.

Ali,  
Nursing Associate  
Apprenticeship

 I AM KNOWLEDGEABLE



**This Nursing Associate course is aimed at individuals wanting to work in health and social care, beyond the level of a healthcare support worker, enabling you to have opportunities to progress and develop your career.**

You will work under the leadership and direction of registered nurses from all fields of nursing, providing and monitoring high quality holistic and person-centered care to individuals whilst supporting the registered nurse in the assessment, planning, implementation and evaluation of care.

The course has been developed to provide an outcome based programme of academic and practice-based learning that will develop the wide-ranging skills and capabilities required to work as a registered nursing associate and to support the role of the registered nurse.

Through working in partnership with our local National Health Service partners, and private and voluntary sector partners, students are able to experience a range of health and social care placements across Somerset in acute and community settings.

Modules may include:

- **Improving Quality and Safety of Care**
- **Professional in Clinical Practice 1 and 2**
- **Relationship Management and Communication Skills**
- **Interdisciplinary Team Working**
- **Medicines Management and Pharmacology**
- **Preventing Ill Health and Promoting Health**
- **Provision of Integrated Care.**

#### Teaching and Assessment

Assessments are a mix of written assignments, presentations, exams, and objective structured clinical exam (OSCE).

#### Progression opportunities

Qualified nursing associates can progress into a dynamic career as a registered professional, in addition to being able to progress onto a BSc Nursing degree at an advanced entry point. Both adult and mental health progression routes are available at University Centre Somerset.

#### ENTRY REQUIREMENTS

Typically entrants will possess:

- A minimum of 48 UCAS Points from a full Level 3 qualification
- GCSE maths and English at grade 4 and above, or equivalent.

Type:	Foundation Degree
UCAS Code:	B710
Institution Code:	B70
Attendance:	Full-time
Location:	Taunton
Awarding body:	UWE Bristol

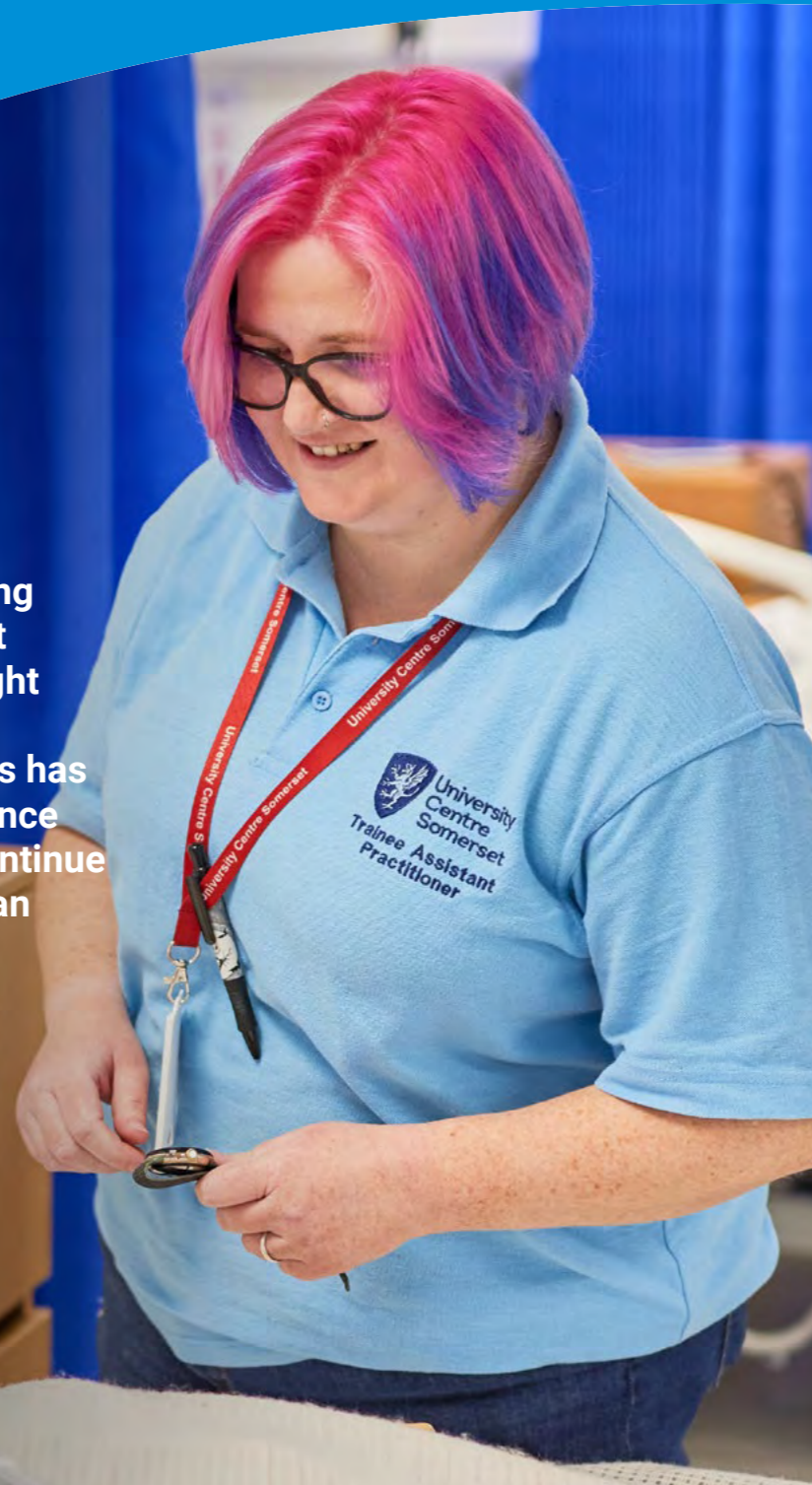


# Assistant Practitioner Foundation Degree



I chose to study at UCS after being promoted to Senior RA/Assistant Practitioner, feeling it was the right path to advance my career. The support from tutors and my peers has been vital to building my confidence and knowledge. I'm excited to continue learning and pursue a career as an Occupational Therapist.

Debbie,  
Assistant Practitioner  
(multiple pathways)



**Assistant Practitioners have skills and experience in a particular area of clinical practice. Although they are not registered practitioners, they have a higher level of skill through their experience and training and work across both the NHS and other areas of healthcare services.**

UCS plans to run the following pathways:

- Health and Social Care
- Mental Health
- Occupational Therapy
- Diagnostic Radiography\*
- Physiotherapy.\*

As an Assistant Practitioner you will work under the direction and supervision of a health professional, such as a Registered Nurse, Dietician or Physiotherapist. However, your level of training and experience means you can often work autonomously. You will carry out procedures and clinical tasks, referring to a professional for guidance when necessary.

The Foundation Degree includes academic and work-based practice

*\*subject to validation*



modules designed to cover a range of skills and knowledge required by support staff working in health and social care.

Modules may include:

- Anatomy and Physiology
- Communication for Practice
- Risk Management
- Clinical Practice 1 and 2
- Professional Assessment.

### Teaching and Assessment

Assessments are a mix of written assignments, presentations, and exams.

### Progression Opportunities

On successful completion of the programme, you are eligible to apply for Band 4 Assistant Practitioner positions or equivalent within the NHS and private, voluntary and independent health and social care organisations.

For those who wish to progress their studies, you may be eligible to apply for advanced entry to a Level 6 BSc (Hons) programme, for example BSc (Hons) Nursing.

### ENTRY REQUIREMENTS

Typically entrants will possess:

- A minimum of 48 UCAS points from a full Level 3 qualification
- GCSE maths and English at grade 4 and above, or equivalent.

**Applicants must be employed in a health or care setting for a minimum of 30 hours per week.**

Type:	Foundation Degree
UCAS Code:	B730
Institution Code:	B70
Attendance:	Full-time
Location:	Taunton
Awarding body:	UWE Bristol



*Higher Technical Qualifications (HTQs) have been specifically developed with employers and businesses so that students will get the training, knowledge, and skills they are looking for, unlocking high-skilled and highly paid jobs.*



# Registered Nurse Degree Apprenticeship



The location of the campus so near to Musgrove Park Hospital is ideal. UCS has a great clinical skills centre where we can practice simulations and apply them to our work in the community and on the hospital wards.

Danielle,  
Nursing Degree Apprenticeship



**A Registered Nurse Degree Apprenticeship (RNDA) offers a flexible route to becoming a nurse that doesn't require full-time study at university.**

You will need to be currently employed, or secure a suitable role, and your employer will release you to study.

Your time on campus will be spent learning from a passionate, enthusiastic, skilled, and supportive team with a range of experience across the many aspects of nursing. Your learning will be enriched by the very latest in best practice and clinical understanding.

This apprenticeship has two available pathways:

- **Mental Health Nursing**
- **Adult Nursing.**

Modules may include:

- **Anatomy, Physiology and Pharmacology for Nursing**
- **Episodes of Care 1-4**
- **Fundamentals of Nursing Practice**
- **Principles of Nursing**
- **Sustainable Global Public Health**
- **Assessment and Decision Making**
- **Pharmacology and Medicines Management**
- **Research Methodologies of Nursing Enquiry**

- **Supporting People with Complex Needs**
- **Leadership and Supervision**
- **Nursing Final Project**
- **Transition to Registration.**

Plus, an independent study module where you choose the area of focus within your field of nursing.

#### **Teaching and Assessment**

You are assessed on your knowledge and skills on an ongoing basis and will have to demonstrate that you can meet the required standards throughout your training. There will be a mixture of coursework, projects, exams and an end-point assessment (EPA).

#### **Progression Opportunities**

Registered nurses are in demand across the UK and our graduates enter careers in a variety of roles for the NHS, private and voluntary sector employers, in community and hospital settings. You could go on to specialise in GP practices, schools, as a health visitor, or with patients in their own homes. Once qualified you can also combine clinical practice with study on a post graduate course to specialise in a specific area. Progression could lead to senior positions such as consultant nurse, nurse specialist, researcher, or local or regional services manager.

#### **ENTRY REQUIREMENTS:**

Typically entrants will possess:

- A minimum of 112 UCAS points from a full Level 3 qualification
- GCSEs at grade 4 and above to include English and maths, or equivalent.

You will be required to complete:

- Disclosure and Barring Service check
- Occupational health check.

For mature applicants we may accept non-standard and professional qualifications and experience. If you are unsure as to whether you qualify, we encourage you to contact us.

**In order to undertake this apprenticeship, you are required to have a relevant employer.**

Duration:	Up to 5 years
Location:	Taunton campus
Awarding body:	UWE Bristol



# Student Nursing Associate

## Apprenticeship



I have learned so much from my Apprenticeship, it combines my job at Musgrove Park Hospital as a Trainee Nursing Associate where I gain practical experience, with study at UCS where I am gaining theoretical knowledge, together they have taught me all the skills I need to become a nurse.

Evie,  
Nursing Associate Apprenticeship

 **I AM HIGHLY SKILLED**



**A Student Nursing Associate Apprenticeship offers a flexible route to gaining your qualification that doesn't require full-time study at university.**

This Nursing Associate course is aimed at individuals wanting to work in health and social care, beyond the level of a healthcare support worker, enabling you to have opportunities to progress and develop your career.

You will need to be currently employed, or secure a suitable role, and your employer will release you to study part-time.

You will work under the leadership and direction of registered nurses from a range of nursing specialisms, providing and monitoring high quality holistic and person-centered care to individuals whilst supporting the registered nurse in the assessment, planning, implementation and evaluation of care.

Modules may include:

- **Improving Quality and Safety of Care**
- **Professional in Clinical Practice 1 and 2**
- **Relationship Management and Communication Skills**
- **Interdisciplinary Team Working**
- **Medicines Management and Pharmacology**
- **Preventing Ill Health and Promoting Health**
- **Provision of Integrated Care.**

### Teaching and Assessment

You are assessed on your knowledge and skills on an ongoing basis and will have to demonstrate that you can meet the required standards throughout your training. There will be a mixture of coursework, projects, exams and an end-point assessment (EPA).

### Progression Opportunities

Qualified Nursing Associates can progress into a dynamic career as a registered professional, in addition to being able to progress onto a BSc Nursing degree at an advanced entry point. Both adult and mental health progression routes are available at University Centre Somerset.

### ENTRY REQUIREMENTS:

- Typically entrants will possess:
- A minimum of 48 UCAS Points from a full Level 3 qualification
  - GCSE maths and English at grade 4 and above, or equivalent.

For mature applicants we may accept non-standard and professional qualifications and experience. If you are unsure as to whether you qualify, we encourage you to contact us.

**In order to undertake this apprenticeship, you are required to have a relevant employer.**

Duration:	Up to 3 years
Location:	Taunton campus
Awarding body:	UWE Bristol





**The Level 4 Diploma in Adult Care (England) is specifically designed for learners wanting to work in Adult Social Care in England. Working towards a Lead Adult qualification will help you to make a positive difference to someone's life when they are faced with physical, practical, social, emotional or intellectual challenges. You will be expected to exercise judgement and take appropriate action to support individuals to maintain their independence, dignity and control. By providing leadership, guidance and direction at the frontline of care delivery you will be instrumental in improving the health and wellbeing of those receiving care and support.**

This qualification supports you to learn, develop and practice the skills required for employment and/or career progression in Adult Care in England. It covers a range of topics including the importance of having the right values and behaviours.

To achieve the Level 4 Diploma in Adult Care (England) learners must achieve a minimum of 70 credits overall. At least 55 credits must be achieved at Level 4 or above. The content may include the following areas:

- Working in partnership
- Personalisation in care
- Professional practice
- Professional management and leadership
- Managing quality.

#### Teaching and Assessment

The competency-based qualification is designed to be assessed in the workplace as you undertake your normal work role. There are no examinations on this programme, we use an internal assessment approach. You will produce a work-based portfolio of evidence to reflect application of theoretical knowledge in practice with clear expectations of engagement with statutory frameworks. Attendance may not be required as the qualification is assessed within your workplace. In addition, the awarding body recommends 7-10 hours independent study per week.

#### Progression Opportunities

All social care organisations need strong leaders to meet the challenges ahead amid the growing complexity of the social care sector. Successful completion could enable you to progress to a Level 5 such as the Diploma in Leadership & Management for Adult Care at University Centre Somerset.

#### ENTRY REQUIREMENTS

- Aged 18+
- Employed as a senior adult lead or deputy manager within the relevant sector.

Type:	Level 4 Diploma
Attendance:	Part-time
Location:	Workplace
Awarding body:	City & Guilds



# Leadership & Management for Adult Care

Level 5 Diploma



UCS has good links with the company I work for. I could continue learning and working at the same time, whilst developing my skills within my role.

I have really expanded my learning and development, taking on a new perspective in the way I support the learning of others. This helps ensure that my workplace is running effectively, while at the same time ensuring that the staff feel well supported.

Samantha,  
Leadership and Management for Adult Care Level 5



**This course is an ideal programme if you are looking to develop leadership and specialist skills for use in a current role, or in preparation to progress or take on a developmental or specialist role.**

This qualification covers a range of skills and knowledge relating to leadership and management of adult care services in England, such as decision-making, safeguarding, leading and managing services, service improvement, leading person-centred care and governance and regulatory requirements.

Adult Care services include:

- Residential services for older people and people with disabilities
- Domiciliary care services
- Day services
- Respite services
- Community based services.

This course requires the achievement of a minimum of 90 credits, 79 mandatory and 11 optional. It provides the opportunity to build on your existing knowledge and understanding, and develop skills that will promote quality, encourage leadership, prepare you for management responsibilities and allow for growth in coaching and mentoring others.

The content may include the following areas:

- Leadership and management in adult care
- Governance and regulatory processes
- Professional development, supervision and performance management
- Service improvement, entrepreneurship and innovation
- Leading and managing services for people with learning disabilities
- Mental health and wellbeing.

#### Teaching and Assessment

There are no examinations on this programme, we use an internal assessment approach. You will produce a work-based portfolio of evidence to reflect application of theoretical knowledge in practice, with clear expectations of engagement with statutory frameworks. Attendance may not be required as the qualification can be delivered within your workplace. The awarding body recommends 7-10 hours independent study per week.

#### Progression Opportunities

This qualification allows learners to learn, develop and practise the skills and knowledge required for employment and/or career progression in adult care in England. Learners could progress to Apprenticeships in Social Work, or further Leadership and Management, Foundation Degree Programmes or Teaching and Learning and Assessment qualifications.

#### ENTRY REQUIREMENTS

- Aged 19+
- Employed in the Adult Care sector in England: new or existing registered manager, or deputy manager.
- A formal interview is required.

Type:	Level 5 Diploma
Attendance:	Part-time
Location:	Workplace / Blended
Awarding body:	City & Guilds







I chose UCS for its strong reputation and because I could fit study around my children. The course has been incredibly insightful, and the teaching is outstanding. The supportive tutors have been instrumental in my development, and I'm excited to continue my studies at UCS while pursuing a permanent role in counselling.

Corinne,  
Counselling Practice  
Level 4 Diploma

 I AM EMPOWERED

**The Counselling and Psychotherapy Central Awarding Body (CPCAB) Level 4 Diploma in Therapeutic Counselling is a two-to-three-year, part-time qualification designed to equip you with the knowledge, skills, and competencies required to practise as a therapeutic counsellor within agency settings, including both healthcare and non-medical environments.**

This qualification supports career development in roles such as:

- **Counsellor within an educational institution, such as a college**
- **Counsellor in the third sector**
- **Counsellor employed by a charity**
- **Psychological Wellbeing Practitioner within NHS Talking Therapies services**
- **Independent 'adult' counsellor (with further training and supervision).**

The course aligns with professional standards and ethical principles, promoting best practice and reflective development to ensure client-centred and ethically informed counselling services.

The qualification comprises seven mandatory units, offering the opportunity to deepen your understanding of theoretical perspectives within an integrative framework. The core theoretical model is Petrůska Clarkson's Systems Integrative Psychotherapy.

Units may include:

- **Working ethically, safely and professionally as a counsellor**
- **Working within a counselling relationship**
- **Working with client diversity in counselling work**
- **Working within a user-centred approach to counselling**
- **Working with self-awareness in the counselling process**
- **Working within a coherent framework of counselling theory and skills**
- **Working self-reflectively as a counsellor.**

Core Areas of Learning:

- **Professional ethics and the establishment of clear boundaries**
- **Navigating the complexities of the therapeutic relationship**
- **Working inclusively with difference and diversity**
- **Cultivating self-reflective and self-evaluative practices**
- **Developing skills for effective supervision**
- **Understanding the value and role of supervision in practice**
- **Exploring and deepening your understanding of various theoretical approaches.**

This structure is designed to foster both personal and professional growth, ensuring you can deliver ethically grounded, reflective, and inclusive therapeutic counselling services.

### Teaching and Assessment

The course is delivered through a combination of lectures, tutorials, and experiential activities. You will also participate in experiential encounter groups, which may include a two-day residential experience with an overnight stay.

Your progress will be evaluated through a range of methods designed to assess your knowledge, skills, and reflective practice. These include professional discussions and interactive workshops, regular skills observations, clinical supervision sessions, written assignments and engagement in personal therapy.

These methods ensure that you are thoroughly prepared for professional practice by fostering self-awareness, ethical decision-making, and practical competency.

The placement structure ensures you gain practical experience within a professional and ethically guided environment, building the foundation for safe, competent, and reflective practice.

### Career Progression

Upon successful completion of the course, you will be prepared to provide therapeutic counselling services within the framework of an agency's service provision.



### ENTRY REQUIREMENTS

#### Placement Requirements:

You must have completed a Level 3 programme of at least 150 face to face taught hours that includes assessment of knowledge and skills.

You will need to commit to 25 hours of personal therapy and obtain an enhanced DBS to be able to complete the placement requirements of the course. All applications are subject to references and interview. Before commencing your placement, you must successfully complete a competency-to-practice assessment.

During the placement, you will:

- **Work within an agency setting to complete a minimum of 100 hours of formally contracted one-to-one counselling with at least five different clients.**
- **Engage in clinical supervision to support your agency-based client work.**
- **Participate in 30–50 hours of group training supervision as part of the course.**

You will also be required to join a recognised professional body, such as the British Association for Counselling and Psychotherapy (BACP) or the National Counselling Society (NCS), as a student member. Membership involves adherence to an ethical framework or code of ethics. Information on current student membership fees is available on the BACP or NCS websites.



# Sports Science and Coaching

BSc (Hons) Subject to validation

“

My greatest accomplishment is being the Captain of UCS's first Netball team which I now coach. My course has given me an insight into future careers in sport and with the blend of theory and practical skills I have learnt, I want to pursue a career in teaching or coaching.

Ellie,  
Sport & Exercise Science (Coaching Science)  
HND

 **I AM COMMUNITY MINDED**

**The purpose of the new Sports Science and Coaching degree programme is to provide students with comprehensive knowledge and skills in the field of sports science and coaching. This programme aims to equip students with a strong foundation in sports science principles, coaching techniques, and practical experience, allowing them to pursue careers in various areas of the sports industry.**

As part of the programme, you will conduct a range of laboratory-based fitness tests in our state-of-the-art sport performance lab. Data produced will be applied to optimise sports performance through relevant coaching, pedagogical theory and best practice.

Modules may include:

- **Developing Coaching Practice**
- **Fundamentals of Sport Nutrition**
- **Sports Performance Analysis**
- **Foundations of Sport and Exercise Psychology**
- **Optimising Athletic Performance**
- **Advanced Professional Placement**
- **Dissertation.**

There may be the opportunity to take part in a variety of day trips and visits for which there may be an additional cost.

### Teaching and Assessment

Assessment methods include traditional essays, laboratory reports, presentations, screencasts, podcasts and practical deliveries.

### Progression Opportunities

On completion of the course you may progress into employment or you could continue your studies with a Master's degree or PGCE.



### ENTRY REQUIREMENTS

Typically entrants will possess:

- A minimum of 96 UCAS tariff points from a full Level 3 qualification in a relevant subject area
- At least four GCSEs at grade 4 and above including English, maths and science, or Level 2 equivalent.

Mature applicants with relevant experience, who do not have the stated entry requirements, are encouraged to apply.

Type:	Bachelors Degree
UCAS Code:	TBC
Institution code:	B70
Attendance:	Full-time
Location:	Taunton & Bridgwater
Awarding body:	University Centre Somerset (subject to OfS approval)



# Certificate in Education

## Level 5 Certificate



**This has been my dream come true, to have this opportunity and to be so supported by UCS. It can be daunting changing careers later on, but I'm so pleased that I did. Its such a rewarding job and something that I really love.**

Sarah,  
Education & Training Graduate

A Level Lecturer at Bridgwater & Taunton College



### ENTRY REQUIREMENTS

*This course is available to those who do not hold a bachelors or masters degree.*

Typically entrants will possess:

- English and maths qualifications at Level 2 (e.g. GCSE grade 4; grade C or equivalent)
- A suitable placement and mentor in place, prior to the commencement of the course
- A minimum of a Level 3 qualification in your specialist area
- Relevant professional, industrial or commercial experience will be considered if formal qualifications are not available or relevant.

You will be required to undergo a Disclosure and Barring Service check, register with the Independent Safeguarding Authority and complete a criminal convictions self-declaration form.

Type:	Level 5 Certificate
Attendance:	Part-time or Full-time
Location:	Taunton
Awarding body:	University of Plymouth

**The Postgraduate Certificate in Education on page 42 is available to those who have a Bachelors or Masters degree.**

**This nationally-recognised course enhances your employability as a teacher and is tailored for applicants who hold a Level 3 qualification and/or substantial vocational experience. It leads to the award of Certificate in Education Level 5 by University of Plymouth. This course also has the Level 5 Diploma in Teaching (DiT) embedded into its structure.**

On successful completion, the course provides the opportunity to achieve Qualified Teacher Learning and Skills (QTLS) status in the Further Education and Skills sector.

As part of the entry requirements, you will need to provide evidence of securing an appropriate professional placement to include a minimum of 150 hours of direct teaching practice, plus 30 hours additional professional practice over the duration of the course. Support with exploring placement options is available from the course tutor. This should be in a leading role that carries the full range of teaching, learning and assessment responsibilities.

Mandatory modules are:

- **Learners, Learning and Teaching**
- **Subject Specialist Teaching and Managing the Learning Environment**
- **Teaching and the Curriculum**
- **Professional Practice.**

#### Teaching and Assessment

You will work closely with your colleagues on the programme, learning together and from one another, with peer support playing an important part of the programme organisation and learning. Your teaching observations are carried out by course tutors and subject-specialist mentors in an atmosphere of professional evaluation and support.

The course is assessed through a range of methods including; written coursework, professional portfolio development, 150 hours mandatory teaching practice, observed practice, a viva (orally discussed assessment).

#### Progression Opportunities

Completion of the course could lead to full-time or part-time employment in the Further Education and Skills sector. Recent graduates have gone on to work in a variety of Further and Higher Education institutions regionally and nationally, for example Bridgwater & Taunton College and training roles within the National Health Service at Musgrove Park Hospital.





I studied Computing and Digital Technologies at UCS, before moving on to complete my PGCE. I'm now a Computing lecturer at Bridgwater & Taunton College. I wouldn't be in this role without the knowledge and support I gained through my courses at UCS.

Mitchell,  
PGCE



ENTRY REQUIREMENTS

Typically entrants will possess:

- Bachelors or Masters degree in a relevant subject.
- A suitable placement and mentor in place, prior to the commencement of the course
- English and maths qualifications at Level 2 (e.g. GCSE grade 4; grade C or equivalent).

You will be required to undergo a Disclosure and Barring Service check, register with the Independent Safeguarding Authority and complete a criminal convictions self-declaration form.

Type:	Level 6 / 7 Diploma
Attendance:	Part-time or Full-time
Location:	Taunton
Awarding body:	University of Plymouth

The Certificate in Education on page 40 is available to those who do not have a Bachelors or Masters degree.

**This nationally-recognised course enhances your employability as a teacher. It leads to the award of a Postgraduate Certificate in Education, at Level 7 or Professional Graduate Certificate in Education at Level 6 by University of Plymouth. This course also has the Level 5 Diploma in Teaching (DiT) embedded into its structure.**

On successful completion, it provides the opportunity to achieve Qualified Teacher Learning and Skills (QTLS) status in the Further Education and Skills sector.

Mandatory modules are:

- **Learners, Learning and Teaching**
- **Subject Specialist Teaching and Managing the Learning Environment**
- **Teaching and the Curriculum**
- **Professional Practice.**

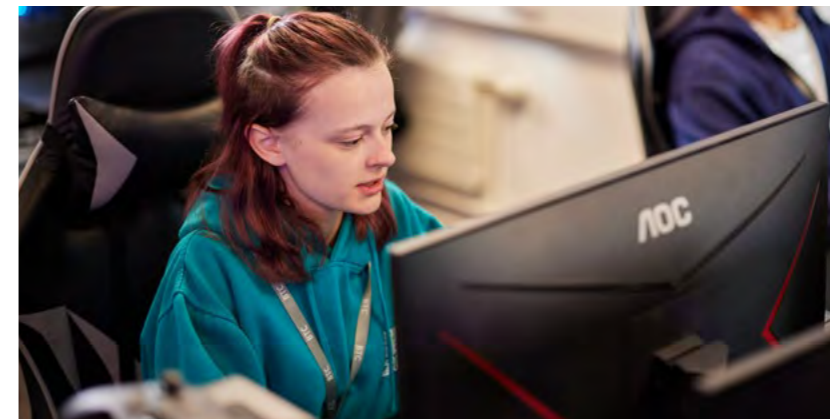
**Teaching and Assessment**

You will work closely with your colleagues on the programme, learning together and from one another, with peer support playing an important part of the programme organisation and learning. Your teaching observations are carried out by course tutors and subject-specialist mentors in an atmosphere of professional evaluation and support.

The course is assessed through a range of methods including; written coursework, professional portfolio development, 150 hours mandatory teaching practice, observed practice, a viva (orally discussed assessment).

**Progression Opportunities**

Completion of the course could lead to full-time or part-time employment in the Further Education and Skills sector. Recent graduates have gone on to work in a variety of Further and Higher Education institutions regionally and nationally, and staff training roles within the National Health Service.





## Where to find us

One of the benefits of University Centre Somerset is our accessibility. So however you're travelling, you will find us easy to get to.

### Rail

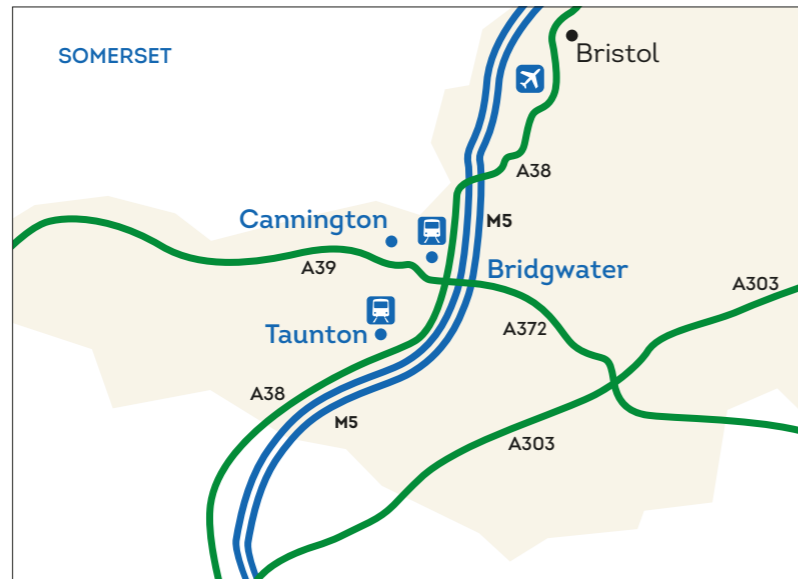
Our Taunton and Bridgwater campuses are easily accessible by train. Both towns are on the main line from Bristol to Exeter, and our campuses are within an easy walk or taxi ride of the station.

### Bus

We have bus stops on each of our campuses, served by local bus routes. A regular connection runs between the Bridgwater and Cannington campuses.

### Car

All three campuses are easily accessible from the M5 motorway. Each campus offers limited parking, including designated areas for disabled parking, mopeds and bicycles. You will be charged **£1 per day to park at our Taunton campus**, while parking is free at the Bridgwater and Cannington campuses.



#### Taunton campus

Wellington Road  
Taunton  
Somerset  
TA1 5AX

01278 441234

info@somerset.ac.uk



#### Bridgwater campus

Bath Road  
Bridgwater  
Somerset  
TA6 4PZ

#### Cannington campus

Rodway  
Cannington  
Somerset  
TA5 2LS

## UCS course list

### AGRICULTURE, ENVIRONMENTAL MANAGEMENT AND ECOLOGY

**Agricultural Management**  
Foundation Degree

**Agricultural Management**  
BSc (Hons) Top-up

**Animal Management, Ecology and Conservation**  
BSc (Hons)

**Animal Management, Ecology and Conservation**  
Foundation Degree

**Animal Management, Ecology and Conservation**  
BSc (Hons) Top-up

**Animal Management**  
Level 4 Professional Certificate

**Apprenticeships**  
**Countryside Ranger**  
Level 4

### DIGITAL INNOVATION, ENGINEERING AND CLEAN ENERGY

**Computing and Digital Technologies**  
BSc (Hons)

**Computing and Digital Technologies**  
Foundation Degree

**Computing and Digital Technologies**  
BSc (Hons) Top-up

**Construction Management for England**  
HNC Level 4

**Electrical & Electronic Engineering for England**  
HNC Level 4

**Manufacturing Engineering for England**  
HNC Level 4

**Mechanical Engineering for England**  
HNC Level 4

**Motorsport Engineering\***  
BEng (Hons)

**Mechanical Engineering with Nuclear**  
BEng (Hons)

**Electrical, Electronic and Control Engineering with Nuclear**  
BEng (Hons)

### Apprenticeships

**Construction Site Engineering Technician**  
Level 4

**Construction Site Supervisor**  
Level 4

**Engineering Manufacturing Technician**  
Level 4

**Nuclear Engineer**  
Level 6 Degree

\*Subject to validation



## HEALTH, WELLBEING AND EDUCATION

### Early Childhood Education and Care

BA (Hons)

### Early Childhood Education and Care

Foundation Degree

### Early Childhood Education and Care

BA (Hons) Top-up

### Nursing (Adult)

BSc (Hons)

### Nursing (Mental Health)

BSc (Hons)

### Nursing Associate

Foundation Degree

### Assistant Practitioner (multiple pathways)

Foundation Degree

### Adult Care

Level 4 Diploma

### Leadership & Management for Adult Care

Level 5 Diploma

### Therapeutic Counselling

Level 4 Diploma

### Sports Science and Coaching\*

BSc (Hons)

### Certificate in Education

Level 5 Certificate

### PGCE

Level 6 / 7 Diploma

## Apprenticeships

### Registered Nurse

Level 6

### Nursing Associate

Level 5

### Lead Practitioner in Adult Care

Level 5

### Leader in Adult Care

Level 4

### Healthcare Assistant Practitioner

Level 5

### Leadership and Management for Adult Care

Level 5

### Sports Coach

Level 4

## BUSINESS AND CREATIVE INDUSTRIES

### Management and Leadership

Level 5 Award / Certificate  
/ Diploma

### Art & Design

Foundation Diploma

### Makeup Artistry, Prosthetic FX and Wig Making

BA (Hons)

### Makeup Artistry, Prosthetic FX and Wig Making

Foundation Degree

### Makeup Artistry, Prosthetic FX and Wig Making

BA (Hons) Top-up

## Apprenticeships

### Associate Project Manager

Level 4

### Operations/Departmental Manager

Level 5

### Access to HE

### Nursing, Midwifery and Healthcare

### Science

\*Subject to validation



# Coming soon to University Centre Somerset

From 2026, UCS is seeking to award and validate its own degrees, subject to approval from the Office for Students (OfS). This, combined with the continued work with our university partners, will allow us to deliver on our commitment to providing 'DEGREES FOR REAL LIFE', transforming lives and our communities through higher and degree level education.

## UCS degrees coming soon\* ...

### SEPTEMBER 2026

- BEng (Hons) Motorsport
- BSc (Hons) Applied Sport Science and Coaching
- BSc (Hons) Occupational Therapy (validated by UWE Bristol)
- BEng (Hons) Instrument Control & Automation
- BSc (Hons) Manufacturing Management
- BSc (Hons) Digital Marketing
- BSc (Hons) Animal Management, Ecology & Conservation
- BA (Hons) Makeup Artistry, Prosthetic & Wig Making
- BSc (Hons) Computing and Digital Technologies
- BSc (Hons) Agriculture Management

### SEPTEMBER 2027

- BSc (Hons) Counselling
- BA (Hons) Primary Education (with QTS)
- BA (Hons) Youth & Community Work
- BA (Hons) Early Childhood Education & Care

### SEPTEMBER 2028

- BSc (Hons) Midwifery (validated by UWE Bristol)
- BSc (Hons) Paramedic Science (validated by UWE Bristol)

*\* Launch dates are provisional and UCS and UWE Bristol retain the right not to validate or run any of the above*

Expressions of interest help us to understand the demand for these courses, and improve the likelihood of UCS running them. If you are interested in any of the above, please follow this QR code and let us know!





University  
Centre  
Somerset

# DEGREES FOR REAL LIFE

COME AND  
SEE FOR YOURSELF

## OPEN EVENTS

See what makes University Centre Somerset  
the perfect place to start your journey.

Every effort has been made to ensure that the information in this prospectus is fair and accurate at the time of print (February 2025). Bridgwater & Taunton College reserves the right to amend information at any time.

01278 441234 | [info@somerset.ac.uk](mailto:info@somerset.ac.uk) | [somerset.ac.uk](http://somerset.ac.uk)

